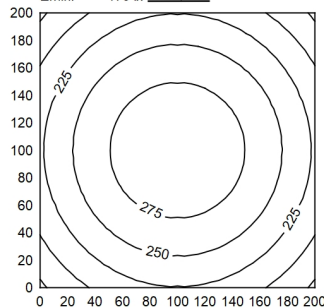
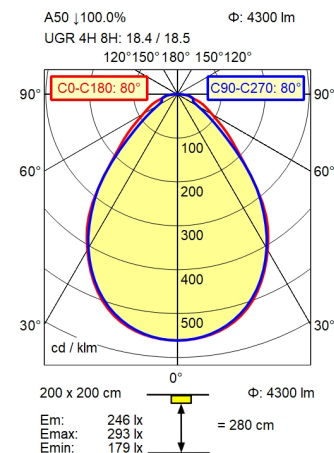


CE

5 pin



$E 0^\circ$		
C0-C180: 80°	9655 lx	C90-C270: 80°
0.50 m		0.84 m   0.84 m
1.00 m	2414 lx	1.68 m   1.68 m
1.50 m	1073 lx	2.52 m   2.52 m
2.00 m	603 lx	3.36 m   3.36 m
2.50 m	386 lx	4.20 m   4.20 m
3.00 m	268 lx	5.04 m   5.04 m
3.50 m	197 lx	5.88 m   5.88 m

Light source

Work equipment

Connected load

Secondary tension

Power consumption

Sec. power consumption

Luminous flux

Luminous efficiency <sup>1)</sup>

Light type/-color

Colour temperatur

Color rendering index

Light distribution

Beam angle

Chromaticity tolerance LED

Glare control

Luminance (L65)

UGR class (4H 8H; EN 12464-1)

System of protection/Class <sup>2)</sup>

Technology

Operation

Housing

Mains lead

Design

Installation dimensions

Maximum ambient temperature

Life expectancy LED

EAN

Weight without/incl. packaging

Special features

LED

Power supply unit

220 - 240 V; 50 Hz; 60 Hz

24 V

ca. 30 W

ca. 28 W

approx. 4.300 lm

approx. 143 lm/W

Cold white

approx. 4.000 K

CRI  $\geq$  80

Direct; approx. 100 %

80°

< 3 SDCM

Prism aperture

$\leq$  2.800 cd/m<sup>2</sup>

$\leq$  19

IP 40; 05; II

Switchable

External

Sectional aluminium; White

ca. 0,8 m; Connector; 5 pin

Integrated version

ca. 1.250 mm; 312,5 mm; 40 mm

25 °C

L80B50 75.000h

4013330187460

ca. 2,9 kg

Flicker-free; Direct light component with edge light and light-guide technology for homogenous light exit; Strain relief with the possibility of through-wiring

<sup>1)</sup> For luminaires with separate control gear, the luminous efficacy refers to the luminaire head without control gear.  
<sup>2)</sup> Higher degree of protection when installed.

Recessed modular luminaire DOTOO.fit  
DFE 4000/840  
114544000-00815303

