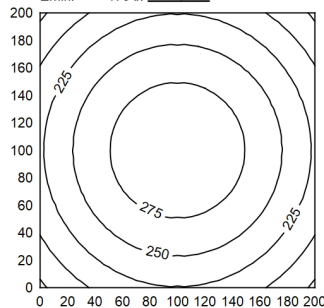


200 x 200 cm  $\Phi$ : 4300 lm  
Em: 246 lx  
Emax: 293 lx  
Emin: 179 lx  
= 280 cm



$\Phi$ : 4300 lm  $E_{0^\circ}$

0.50 m	9655 lx	0.84 m   0.84 m
1.00 m	2414 lx	1.68 m   1.68 m
1.50 m	1073 lx	2.52 m   2.52 m
2.00 m	603 lx	3.36 m   3.36 m
2.50 m	386 lx	4.20 m   4.20 m
3.00 m	268 lx	5.04 m   5.04 m
3.50 m	197 lx	5.88 m   5.88 m

#### Light source

#### Work equipment

#### Connected load

#### Secondary tension

#### Power consumption

#### Sec. power consumption

#### Luminous flux

#### Luminous efficiency <sup>1)</sup>

#### Light type/-color

#### Colour temperatur

#### Color rendering index

#### Light distribution

#### Beam angle

#### Chromaticity tolerance LED

#### Glare control

#### Luminance (L65)

#### UGR class (4H 8H; EN 12464-1)

#### System of protection/Class <sup>2)</sup>

#### Technology

#### Operation

#### Housing

#### Mains lead

#### Design

#### Installation dimensions

#### Maximum ambient temperature

#### Life expectancy LED

#### EAN

#### Weight without/incl. packaging

#### Special features

LED

Power supply unit

220 - 240 V; 50 Hz; 60 Hz

24 V

ca. 30 W

ca. 28 W

approx. 4.300 lm

approx. 143 lm/W

Cold white

approx. 4.000 K

CRI  $\geq$  80

Direct; approx. 100 %

80°

< 3 SDCM

Prism aperture

$\leq$  2.800 cd/m<sup>2</sup>

$\leq$  19

IP 40; 05; II

Continuously dimmable; DALI; Touch DIM

External

Sectional aluminium; White

ca. 0,8 m; Connector; 5 pin

Integrated version

ca. 1.250 mm; 312,5 mm; 40 mm

25 °C

L80B50 75.000h

4013330187477

ca. 3 kg

Flicker-free; Direct light component with edge light and light-guide technology for homogenous light exit; DALI Load 1x; Strain relief with the possibility of through-wiring

<sup>1)</sup> For luminaires with separate control gear, the luminous efficacy refers to the luminaire head without control gear.  
<sup>2)</sup> Higher degree of protection when installed.

Recessed modular luminaire DOTOO.fit  
DFE 4000/840/D  
114545000-00815304

