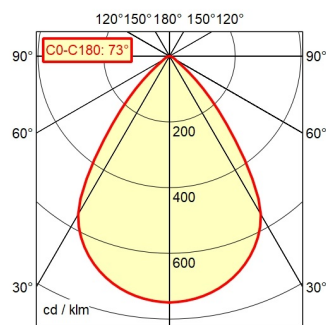


CEE 7/XVI

A60 100.0%

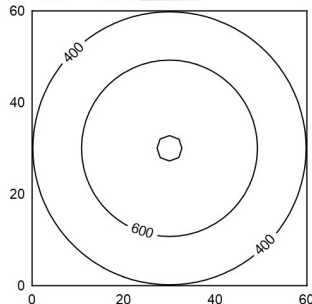
Φ: 300 lm



60 x 60 cm Φ: 300 lm

Em: 522 lx
Emax: 806 lx
Emin: 199 lx

= 50 cm



Light source

Work equipment

Connected load

Secondary tension

Power consumption

Sec. power consumption

Standby

Power factor

Luminous flux

Luminous efficiency ¹⁾

Light type/color

Colour temperatur

Color rendering index

Light distribution

Beam angle

Chromaticity tolerance LED

Glare control

System of protection/Class

Technology

Operation

Housing

Light source cover

Arm

Balance of articulation joints

Mains lead

Fastening

Energy efficiency class

EAN

Weight without/incl. packaging

Packaging dimensions

Special features

LED module

Electronic plug-in transformer

100 - 240 V; AC; 50 Hz; 60 Hz

5 V

ca. 4 W

ca. 3,5 W

ca. 0,3 W

env. 0,97

approx. 300 lm

approx. 96 lm/W

Cold white

approx. 4.000 K

CRI ≥ 80

Direct; approx. 100 %

73°

< 3 SDCM

Optics

IP 20; II with plug-in power supply, III without plug-in power supply

Continuously dimmable; DC control signal

Push button

Plastic; Untreated; Umbra grey

Polycarbonate (PC); Satine

Tubular aluminium section; Anodized; Tubular section upright; Titanium Friction

ca. 1,5 m; Mains plug; CEE 7/XVI

Adaptor (accessory); Table clamp (accessory); Table base

E

4013330143527

ca. 1,9 kg; 2,8 kg

ca. 990 mm; 190 mm; 130 mm

Push button in luminaire head

¹⁾ For luminaires with separate control gear, the luminous efficacy refers to the luminaire head without control gear